

alzchem
group



AGILE SCIENCE PURE RESULTS

ALZCHEM GROUP AG

Sustainability

WE ACT.

WE ACT NOW.

WE ACT TOGETHER.

WE ACT. Sustainability

For us, growth and sustainable business are inextricably linked. Above all, this includes the protection of natural resources and our environment. For the Alzchem Group, this is far more than a duty – it is a matter of course.

Sustainable structures and sustainable management are an integral part of our social and corporate responsibility, which have to fulfil as a globally active company in the field of speciality chemicals. For us, sustainability means, in particular, responsibility for people and the environment.

That is why sustainability is an integral part of our corporate strategy. We are committed to continuously reduce our carbon footprint:

The ultimate goal is climate neutrality until 2033 (Scope 1).



Our contribution

Climate change, global population growth and increasing life expectancy are creating new global challenges. The UN has therefore set 17 goals for sustainable development, to be achieved by 2030 in a cooperative partnership between politics, business and society. We meet these challenges with our sustainability-oriented, innovative product portfolio with high social added value and the highest quality standards.

Our products for agriculture, for example, result in a considerable reduction of climate-damaging emissions or noticeable increases in efficiency, which on the other hand reduces land consumption and ensures the preservation of green area. In the pharmaceutical sector, our products stand for both maintaining health and curing diseases: Our high-purity pharmaceutical building blocks are essential in the production of heart and HIV drugs, for example.

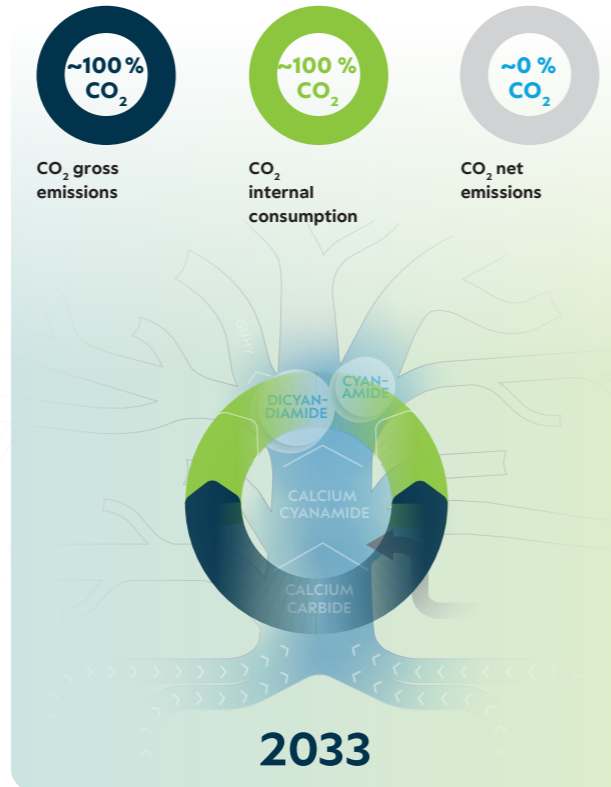
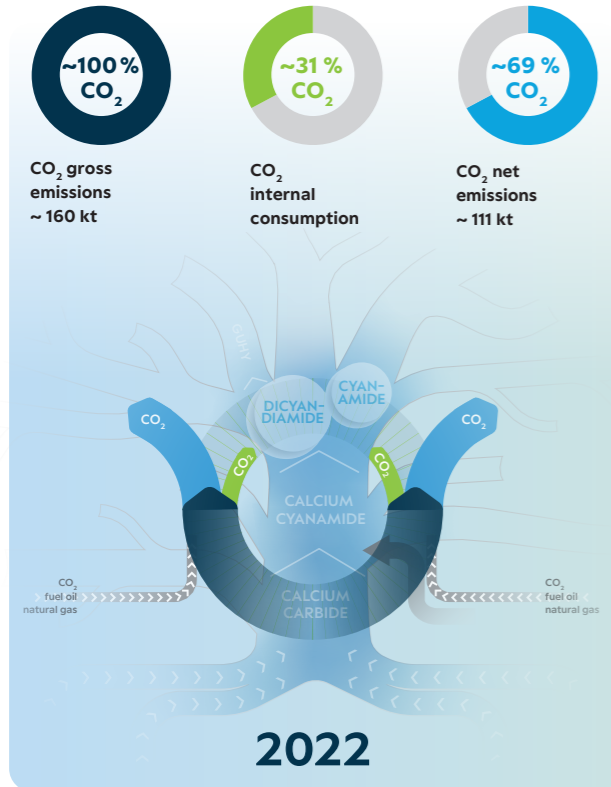
Our business success depends to a large extent on the quality of our products and the satisfaction of our customers. Certifications according to ISO 9001, 14001, 50001, 27001, 17025 and OHRIS as well as successful customer audits are proof of the reliably high level of quality.



SUSTAINABLE DEVELOPMENT GOALS

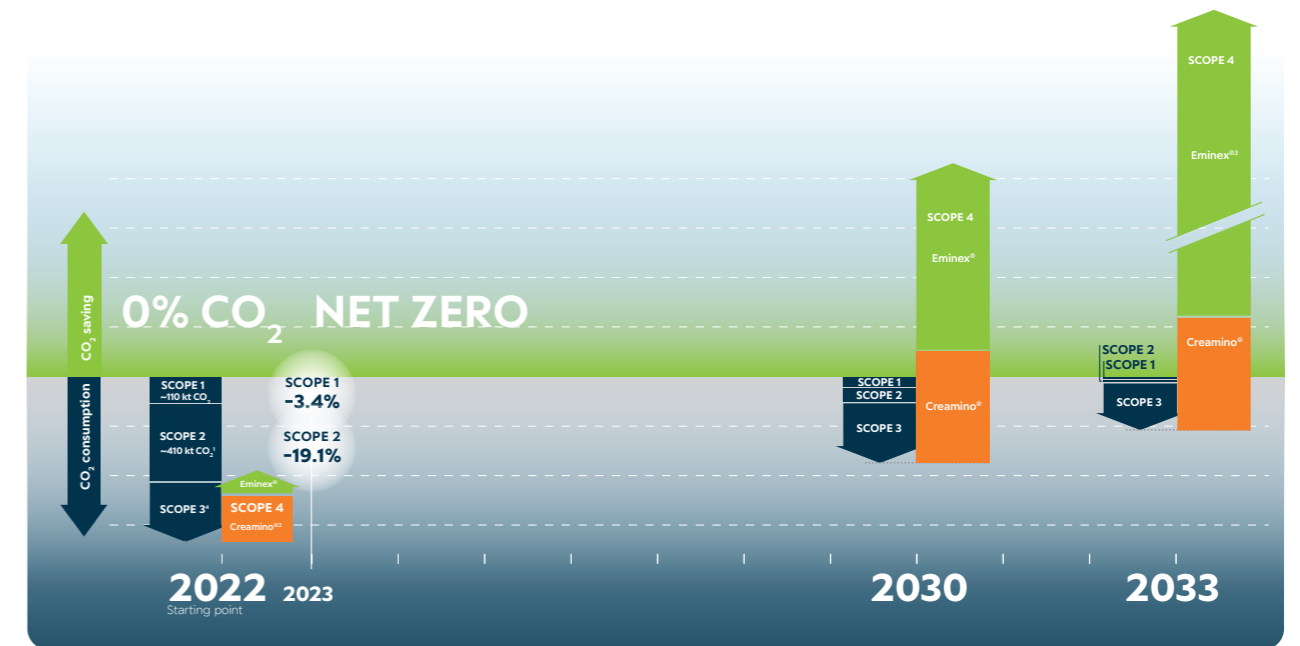


Our CO₂ balance sheet



Further CO₂-compensation potential

The remaining two thirds of our CO₂ emissions amounting to approx. 110,000 tonnes (basis 2022) are to be reduced in the future. We see these so-called Scope 1 emissions as the central adjusting screw that we want to turn with all our might in order to reach „green zero“ (net zero) as quickly as possible. They are therefore at the centre of our climate roadmap.



1 Data basis from 2021
 2 Creamino®: under full capacity utilization from 2030, based on CO₂ savings European feed mix
 3 Eminex®: under full capacity utilization as of 2033
 4 ~ Estimation

Our business already has a very positive carbon footprint. Around 1/3 of total emissions can be reused internally as raw material.

Approx. 69% are emitted, corresponding to around 111 kt.² The next step is to define and implement our package of measures to reduce CO₂ emissions. Suitable compensatory measures can be found for the remaining amount.

Our Creamino® and Eminex®³ products play a key role here. We are convinced, the remaining CO₂ emissions can be over compensated only with these products.

1 Alzchem Annual Report 2022: Group Key Figures, p. 89.
 2 Dates of 2022
 3 Eminex® is a product for controlling bacterial activity in slurry, which leads to a significant reduction of methane/CO₂ equivalents.



OUR PATH TO CLIMATE NEUTRALITY

Click here for the detailed climate roadmap of the Alzchem Group AG



- SCOPE 1** includes the direct release of climate-damaging emissions within the own company.
- SCOPE 2** describes the indirect release of climate-damaging emissions through energy from third parties (e.g. electricity, steam).
- SCOPE 3** considers the entire value chain and includes the indirect release of climate-damaging emissions in the raw and input materials purchased.
- SCOPE 4** measures the climate-positive impact of a company's products on its customers.



ENVIRONMENT

Environmental protection and resource conservation are essential components of our corporate strategy. Thereby not only the economical use of resources reduces the CO₂ footprint of our products, our manufacturing processes are also continuously becoming more sustainable through innovations. Furthermore, we systematically analyse our processes with regard to their impact on the environment, resource consumption, energy efficiency and occupational health and safety in order to proactively identify and eliminate potential hazards and to minimise risks.

We are constantly working on reducing the CO₂ footprint of our products. This includes calculating the CO₂ footprints of our products based on verifiable data and making them available to our customers as required.

In the fight against climate change, the reduction and compensation of climate-damaging emissions is an important component. The Alzchem Group therefore spends around € 24 million annually in measures to improve environmental protection. In recent years, we have succeeded in reducing CO₂ emissions by 50,000 tonnes. The goal is to become climate-neutral by 2033.

Click here for the environmental statement:



WATER

Sustainable water management has been an integral part of our corporate planning for many years: water plays an important role in many production processes. We extract our cooling, process and drinking water from our own groundwater wells. Our sustainable water management enables to monitor our waste water, which consists mainly of cooling water and rainwater. Only about 0.5 per cent of the wastewater is contaminated with pollutants and has to be treated in a wastewater plant. We handle the vital, increasingly scarce resource of water responsibly - always with the aim of reducing consumption.



VERBUND

The majority of the Alzchem Group's products are back-integrated and are based on raw materials from the calcium carbide/calcium cyanamide chain (NCN chain), starting from lime and coke. Through the intelligent integration of our production plants and technologies, including the energy and material flows, the CO₂ footprint of our products could be significantly reduced - e.g. through the energetic use of CO gas, which is a by-product of the production of calcium carbide, as a substitute for oil and gas, combined with the material use of the CO₂ (Carbon Capture and Utilisation - CCU).

WE ACT.



ENERGY

Green energy plays a prominent role in our eco-balance. In order to reduce the CO₂ footprint even further, the electricity demand will increasingly be covered from renewable sources.



WASTE

Through process optimisations along the entire NCN chain, including the use of artificial intelligence (AI), we have been able to significantly increase the yields of our products, which makes economic sense, and at the same time significantly reduces the amount of waste, thereby reducing the environmental impact.



TRANSPORT

The close proximity of our four different production sites around Trostberg and the surrounding area, where further processing into the respective end products takes place, results in short transport routes, mainly by rail.



SUPPLY CHAIN

For us, sustainability in supply chain management means compliance with ecological, social and ethical standards across all supply chains. We prefer to purchase raw materials that are not produced within our production network from European suppliers in order to ensure the shortest possible transport routes. Regular quality and safety audits are carried out at our suppliers. Our CSR supplier rating is a key factor in the assessment and approval of new suppliers.

We continuously develop our processes to meet new requirements, for example from the German Supply Chain Due Diligence Act (LkSG), which obliges companies to take due diligence measures with regard to human rights and certain environmental standards in their supply chains.

WE ACT NOW.



PEOPLE

Our employees ensure the future viability of the Alzchem Group as a sustainable specialty chemicals company. They are the key to our sustainable success. With their professional expertise and active personal commitment, they are largely responsible for the long-term success of our company. Therefore, we offer them attractive and secure jobs as well as extensive opportunities for development and qualification. In addition to a fair remuneration system and attractive social benefits, the Alzchem Group also supports a good work-life balance through flexible working hours and mobile working in a home office.

We listen carefully: with our idea management as a firmly established process, we ensure that no idea is lost. The employees' suggestions for improvement help the Alzchem Group to save millions of euros.

Flat hierarchies, fairness, respect and mutual appreciation in our dealings with one another are part of our corporate culture – regardless of gender, age, origin or sexual orientation. This also applies to our dealings with all of the stakeholders.

Occupational safety and the protection of the health of our employees and contractors are a top priority for us. Safety management in our laboratories and production facilities and the continuous further development of our safety culture are an integral part of our corporate responsibility. The handling of hazardous substances in the production facilities is carried out according to strict guidelines. All employees are regularly familiarised with the hazards with the help of special training. In addition, hazardous substances fall under the principle of substitution in order to avoid hazards to people and the environment as far as possible.

An internal audit system and training with the help of occupational health and safety software (iManSys) in the areas of health protection, occupational safety and the environment support us in achieving the goal of zero reportable accidents (KSUND, LTI, PSIR).

In addition, we offer comprehensive occupational health care at our Trostberg and Hart sites, as well as numerous related measures to prevent work-related illnesses and maintain health at work.

In addition to pure health, the well-being of our employees is also essential for our joint success and the competitiveness of our company. That's why we offer a wide range of options, from healthy food in the company canteen to sports and health courses to specific preventive measures, giving employees the opportunity to design their own individual health programme.

WE ACT.



AUDITS

The Trostberg site was audited by "Together for Sustainability" (TfS), an initiative of the chemical industry to promote sustainability in global supply chains, and rated as very good with regard to ecological and social standards.

Compliance with the Responsible Care guidelines with the aim of continuous improvements in the areas of environmental protection, health and safety, also an initiative of the chemical industry, is also a matter of concern to us.

In 2024, Alzchem once again underwent an independent CSR rating from EcoVadis, the world's leading provider of sustainability assessments. After several gold awards in recent years, Alzchem was able to further improve its rating. In recognition of its achievements in sustainability, the company was awarded the highest distinction, the platinum medal, for the first time. This accolade confirms Alzchem's responsible handling of people and the environment. The company's activities are evaluated in the areas of environment, labor and human rights, ethics, and sustainable procurement. With a score of 84 out of 100 points, Alzchem ranks among the top 1 percent of companies worldwide assessed by EcoVadis.



COMMUNICATION

We design our corporate communications in various ways to get in touch with different stakeholders. We maintain an open dialogue with our neighbours at our locations, among other things through personal discussions with residents, citizens, local institutions and the regional press.

To manage all activities with regard to sustainability, the Alzchem Group established already in 2020 a team dedicated to sustainability, composed of experts from various specialist areas.

The exchange of experience with companies from our region and from our industry is also very important to us. That is why we are involved in various specialist working groups and regional environmental protection initiatives such as the Bavarian Environmental Pact, an agreement on cooperation between the Bavarian State Ministry for the Environment and the Bavarian industry.

Social commitment is close to our hearts. As a company with regional roots, we assume responsibility especially in the immediate environment of our sites. The Alzchem Group promotes children's and youth projects, supports school projects and is a member of the non-profit association Wissensfabrik - Unternehmen für Deutschland e.V. (Knowledge Factory – Companies for Germany e.V.) to promote education and entrepreneurship in Germany. In this way, we make an important contribution to social coexistence.

WE ACT TOGETHER.



CORPORATE GOVERNANCE

As a globally active company, the Alzchem Group is fully committed to corporate governance and compliance. Our corporate guidelines define our behaviour, both internally in dealings with each other and externally in contacts with business partners, authorities and the public.

In addition, we ensure that our business activities comply with all social guidelines, ethical principles and core values. These include, in particular, the observance of human rights and the fight against corruption and bribery.

We are committed to fair competition in our markets for the benefit of our customers, always act with integrity in our business dealings and combine economic success with responsibility for the environment and society.

The principles and corporate guidelines on sustainability form the framework for strategic and operational objectives, they are constantly structured and are firmly anchored in our corporate culture. Every employee in all Alzchem Group sites and subsidiaries worldwide makes their own individual contribution to this.

The Alzchem Group has installed a Compliance Officer as a contact person and for the continuous improvement and monitoring of compliance and the compliance management system. It ensures independent and objective processing of all concerns addressed to him. In this function, the position reports directly to the Board of Management, but acts completely independent. He is available to all employees as a contact person both to answer questions about possible compliance risks and as a professional advisor in connection with the corporate guidelines. Furthermore, an external reporting office ("Whistleblower Hotline") has been set up for all employees as well as third parties, for example business partners or customers.

WE ACT GLOBALLY.



DIGITALISATION

On the way to a sustainable industry and a more sustainable society, digitalisation is an important tool.

With digital solutions and technologies, which we apply in a large number of projects, resources can be used more efficiently, supply chains can be better tracked, energy and time can be saved, and the circular economy can also be implemented more consistently.

We are strengthening our innovative power through the opportunities and possibilities offered by digitalisation in research and development, in production and along the entire value chain.

The processing of large amounts of data combined with high computing power (AI, Big Data) opens up optimisation potential and helps in the development of new and sustainable solutions. Thus, with the help of descriptive analysis, i.e. by recognising simple patterns with statistical key figures and graphic methods, the particle size of one of our products can be precisely predicted.

In apprenticeship, we have completely switched to digital solutions with tablets in order to save paper on the one hand and to increase the effectiveness and efficiency of our trainees and strengthen their IT skills on the other. For example, the data recording of can be done completely via the tablet and also regulations and all documents with notes can be securely stored here.

Through the targeted use of digital technologies, we will continue to develop sustainable solutions, further optimise our workflows and make our production processes safer, more efficient and more resource-efficient.

WE ACT DIGITALLY.



Alzchem Group AG
CHEMIEPARK TROSTBERG
Dr.-Albert-Frank-Str. 32
83308 Trostberg
Germany

Strategic Corporate Development
P +49 8621 86-3600
F +49 8621 86-503600
sustainability@alzchem.com



[alzchem.com](https://www.alzchem.com)